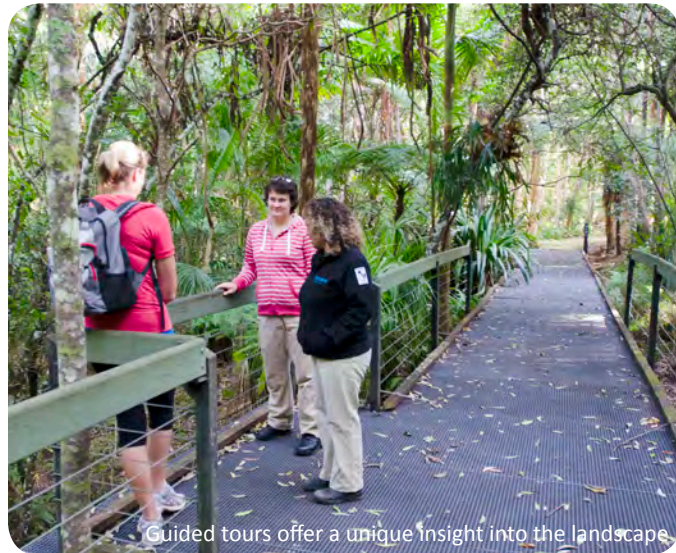
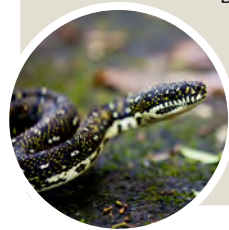
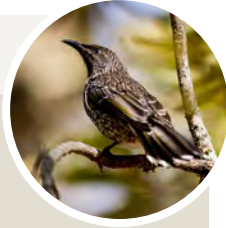


Please Remember

To preserve the Gardens for everyone's enjoyment and safety:

- All plants and animals are protected.
 - Please do not remove any plant material including flowers and seeds
 - Do not feed the wildlife
- Electric BBQ's are provided – wood fires are not permitted.
- Take all rubbish with you or place in the bins provided.
- Only drink water from bubblers provided – all other water is non-potable.
- Please report any hazards or dangers to staff.
 - Beware of spiders, snakes and ticks.
 - On repeated blasts from the siren, proceed to the car park area immediately.
 - Secure your vehicles and bicycles in the car park.



Guided tours offer a unique insight into the landscape

‘walawaani njindiwan njin booderee’

(Welcome everyone this is Booderee)

The Booderee Botanic Gardens are the only Aboriginal owned botanic gardens in Australia.

Aboriginal Ownership

In 1995, Wreck Bay Aboriginal Community successfully acquired ownership of Booderee National Park and the Botanic Gardens. The Park and the Gardens are now jointly managed by Wreck Bay Aboriginal Community and the Director of National Parks for the enjoyment of everyone.

The Wreck Bay Aboriginal Community have had an unbroken association with Booderee for tens of thousands of years and over that time developed a wealth of knowledge about plants and animals and their use for bush tucker, medicine and technology.

The Wreck Bay Aboriginal Community was instrumental in the development of the Gardens including many of the plants, rock walls, garden beds and plantings.

Non-Aboriginal history

The non-aboriginal history on this site has been varied and interesting. In the early 1900's the site was known as Bherwerre farm and owned by the Australian piano manufacturer, Octavius Beale. Beale used the site in a failed attempt to grow timber for his piano frames. He then focussed on grazing and dairy. A plaque commemorating the old Beale homestead is located in the Rock Lawn.

In 1951, the area was selected as the frost free annex of the Australian National Botanic Gardens, and called the Jervis Bay Botanic Garden.

About the Gardens

Covering over 80 hectares in a unique setting of cultivated areas surrounded by natural bushland, the Botanic Gardens display over 1000 species of native plants from the NSW South Coast. On display are plants and various plant ecologies including heath, woodland, rainforest and forest.



Opening hours

The Gardens are open 365 days of the year but opening hours vary according to the season. Opening times are displayed at the entrance to the Gardens and on our website.

Educational and guided tours

Koori led tours and other activities are available during the school holidays, and also on request for school groups (depending on staff availability). Bookings are essential for all guided activities. Check the website for further information on booking educational tours or phone (02) 4442 1006 for details.

Events and activities

The Gardens are available for special events such as weddings and other public gatherings. Permits and special conditions apply, please call (02) 4442 1006 for more information.

Admission

Admission to the Gardens is included in the Park Use Fee for Booderee National Park.

For more information please visit www.booderee.gov.au, come to the Visitor Centre or call (02) 4443 0977. Check our website for Visitor Centre opening times.

Booderee is a jointly managed place

Images courtesy Jon Harris Photography, June Anderson



Australian Government
Director of National Parks



Botanic Gardens



Walks

Rainforest Gully Walk

A popular short walk through the cool rainforest gully. Start at the Green Hut, cross the boardwalk and follow the path.

Distance: **0.5 km** Grade: **Easy** Time: **15 mins**



Koori Garden Walk

This walk is being developed to inform visitors about Wreck Bay Aboriginal culture including the use of plants for food, medicine and technology.

Distance: **0.5 km** Grade: **Easy** Time: **15 mins**



Forest Walk

A short introduction to the Garden. See the heart of the Garden's landscape - Lake McKenzie. You will pass by areas rich in ferns and past the former site of Bherwerre farm.

Distance: **1.3 km** Grade: **Easy** Time: **30 mins**



Trails

The Lake Trail

This trail meanders through mature forest and has magnificent views of the lake. The slopes leading to the lake shore are part of ancient sand dunes which have formed this natural lake.

Distance: **1.3 km** Grade: **Medium** Time: **1 hour**

Heath & Woodland Trail

There is always something in flower - no matter what time of year. Stands of grass trees and Christmas bush are eye-catching!

Distance: **1 km** Grade: **Easy** Time: **40 mins**

The Lookout Trail

This short trail offers great views across the Gardens and Lake McKenzie.

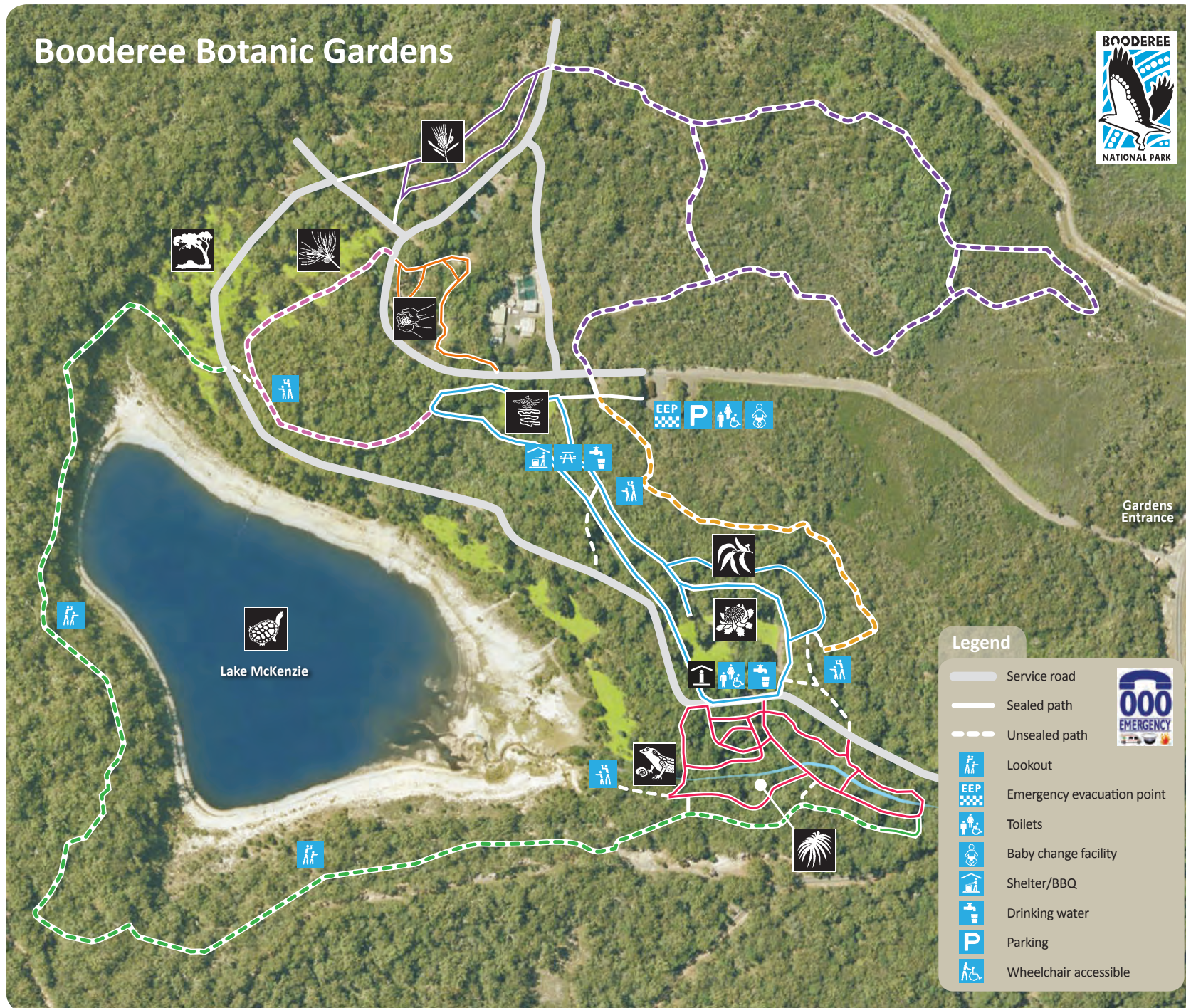
Distance: **400 m** Grade: **Easy** Time: **10 mins**

Casuarina Trail

This short trail offers great views of the lake and a casuarina forest.

Distance: **400 m** Grade: **Easy** Time: **10 mins**

Booderee Botanic Gardens



Scribbly Gum Lawn

A shelter shed with electric BBQ's and picnic tables are available before or after your walk. It is the hub of many of the Gardens' walks and a great place to relax.



Green Hut

Displays in the hut provide a glimpse into the history of the area including the involvement of the Wreck Bay Aboriginal Community. The Green Hut sits on the site of the old farm building.



Lake McKenzie

This is a perched lake that is home to the eastern long-necked turtle and seasonal birdlife. Water from the lake is used to irrigate the Gardens. Markers indicate the lake's elevation above sea level.



Heath and Woodland Garden

Displays of plants from many south coast heath and woodland communities are found here. Birds love the many flowering plants in this area.



Koori Garden

The Koori Gardens and education shelter has been developed to inform visitors about Wreck Bay Aboriginal culture including the use of plants for food, medicine and technology.



Casuarina Lawn

A variety of Casuarina species can be found here. Casuarina is the favourite food of the endangered glossy black cockatoo, so keep your eyes open for this beautiful bird.



Eucalyptus Lawn

Here you will find some of the oldest plantings in the Gardens. It offers access to the Lake Trail.



Forest Garden

The tall eucalyptus canopy shelters many forest floor shrubs. On the upper walk rock ledges are smothered in mosses and epiphytes.



Waratah Lawn

Gardens in this area display waratahs, Livistona palms and many flowering plants. It is a great place to relax and picnic. A plaque commemorates the Botanic Gardens 50th Anniversary.



Rock Lawn

The Rock Lawn provides access to the lake foreshore. A plaque featuring the layout of the old Bherwerre farm is also located here.



Rainforest Gully

A small gully full of tree ferns, palms and other native plants adapted to this cool sheltered environment. A boardwalk and lookout offer great views.