

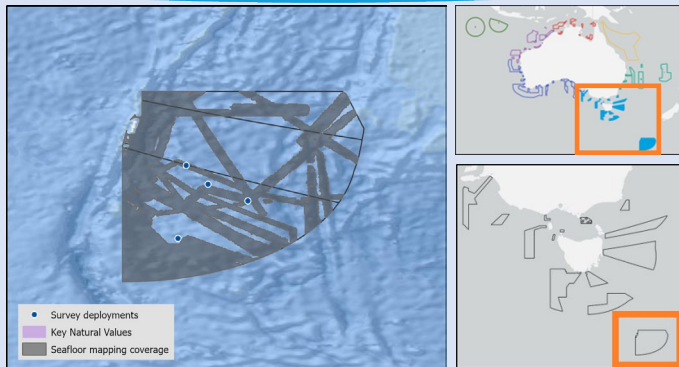
Macquarie Island Marine Park state of knowledge



Australian Government
Parks Australia



Australian
Marine Parks



Interactive [Map](#) and [Report](#).

Macquarie Island Marine Park features both sanctuary and habitat protection zones offering the highest levels of protection to this unique sub-polar park. It covers representative areas of the Macquarie Island Province bioregion.

Depth - 86m – 6000m

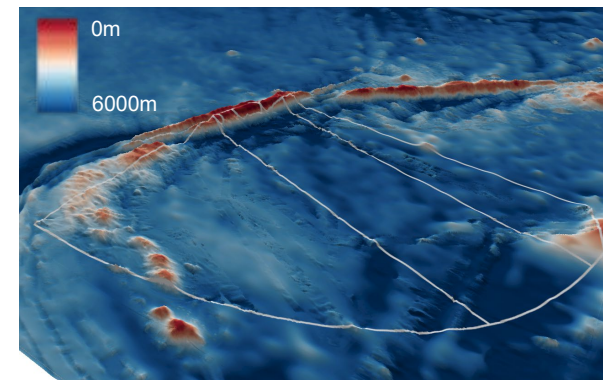
49.7% of seafloor mapped, most at medium resolution to support biodiversity surveys.

Overall knowledge status

Macquarie Island Marine Park has a **low knowledge level**. This is due to its remote location and seasonal constraints. High resolution mapping of Macquarie ridge and a significant number of studies have been conducted on the marine mammal and bird populations inhabiting the area.



Source: Eric Woehler



Source: Geoscience Australia



Source: Eric Woehler

King penguins

King Penguins (*Aptenodytes patagonicus*) breed on Macquarie Island and forage within the park¹.

Patagonian toothfish

Patagonian Toothfish (*Dissostichus Eleginoides*) are a large demersal fish found around Macquarie Island.



Source: Narelle Campbell

Home range

Southern Elephant Seals (*Mirounga leonine*) breed on Macquarie Island³.

Feature of interest

The Macquarie Island Marine Park encompasses important foraging habitat for Royal Penguins (*Eudyptes schlegeli*) the only endemic penguin species on Macquarie Island².

Key knowledge gaps

- Information on high priority shelf, upper slope, reefs, canyons, and sediments identified from fine scale resolution multibeam mapping is required.
- Further research to identify species of conservation interest and their spatial distributions and key habitats.

Key activities

Commercial fishing

Key pressures

Resource extraction
Climate change

Further information:

1. Wienecke & Robertson. 2002. [Foraging Areas of King Penguins from Macquarie Island in Relation to a Marine Protected Area](#)
2. Hull et al. 1997. [Foraging zones of royal penguins during the breeding season, and their association with oceanographic features.](#)
3. Van den Hoff. 2001. [Dispersal of southern elephant seals \(Mirounga leonine\) marked at Macquarie Is.](#) | State of Knowledge published Feb 2023 |