

144°40'E

144°50'E

145°E

145°10'E

145°20'E

40°10'S

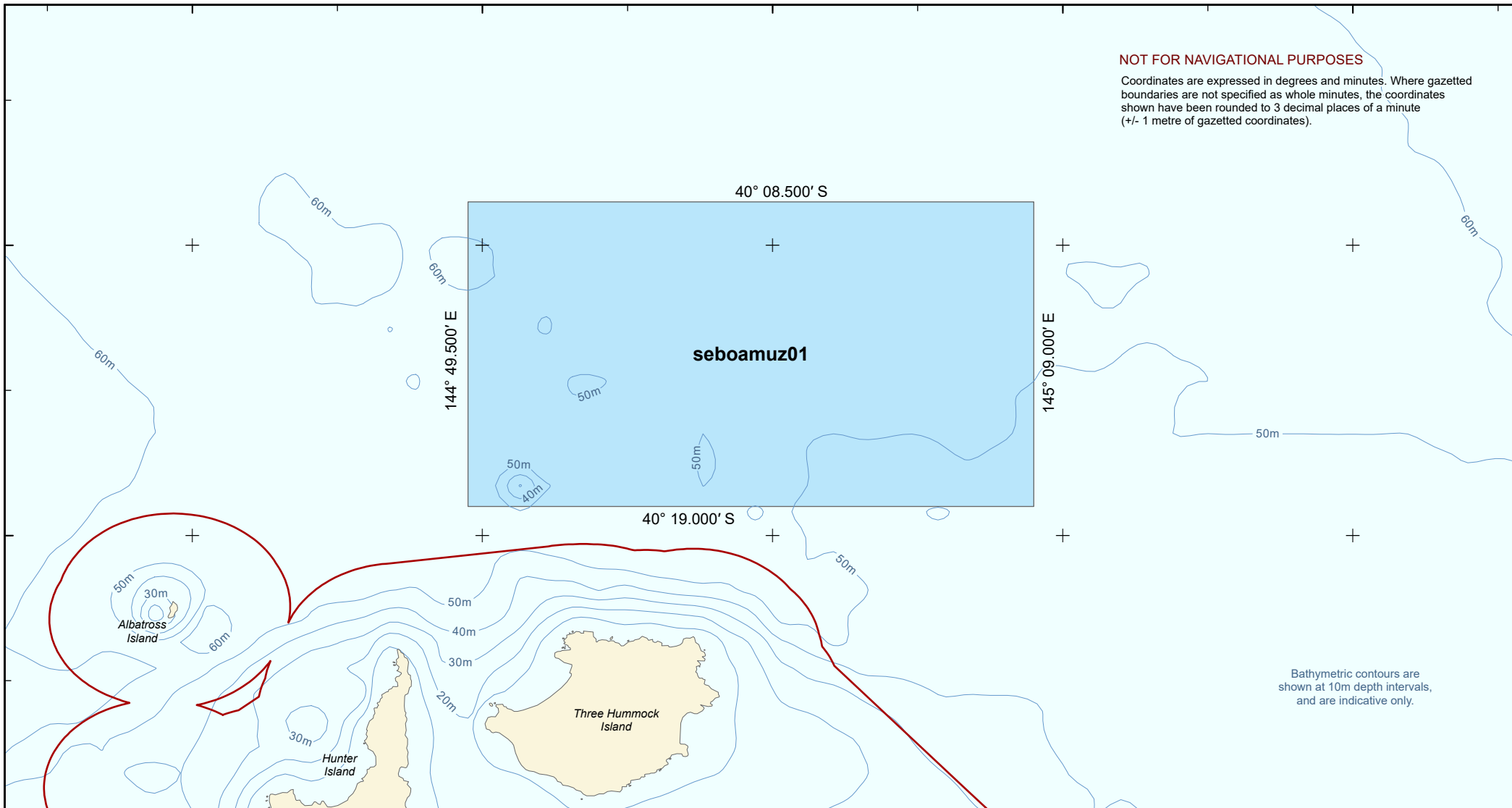
40°20'S

40°10'S

40°20'S

NOT FOR NAVIGATIONAL PURPOSES

Coordinates are expressed in degrees and minutes. Where gazetted boundaries are not specified as whole minutes, the coordinates shown have been rounded to 3 decimal places of a minute (+/- 1 metre of gazetted coordinates).



Bathymetric contours are shown at 10m depth intervals, and are indicative only.

Boags Marine Park

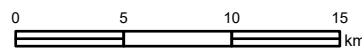
Draft for consultation

Zoning

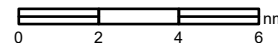
Multiple Use Zone (IUCN VI)

Maritime boundaries

Limit of coastal waters



Approximate scale



Projection: Geographics
Datum: GDA94 (effectively WGS84)

Spatial data sources:
DCCEEW (2024): Australian Marine Parks
Geoscience Australia (2020): Australian Maritime Boundaries
Geoscience Australia (2006): GEODATA TOPO 250K
Geoscience Australia (2005): Australian Bathymetry and Topography

Produced by:
Environment Information Australia | Department of Climate Change,
Energy, the Environment and Water