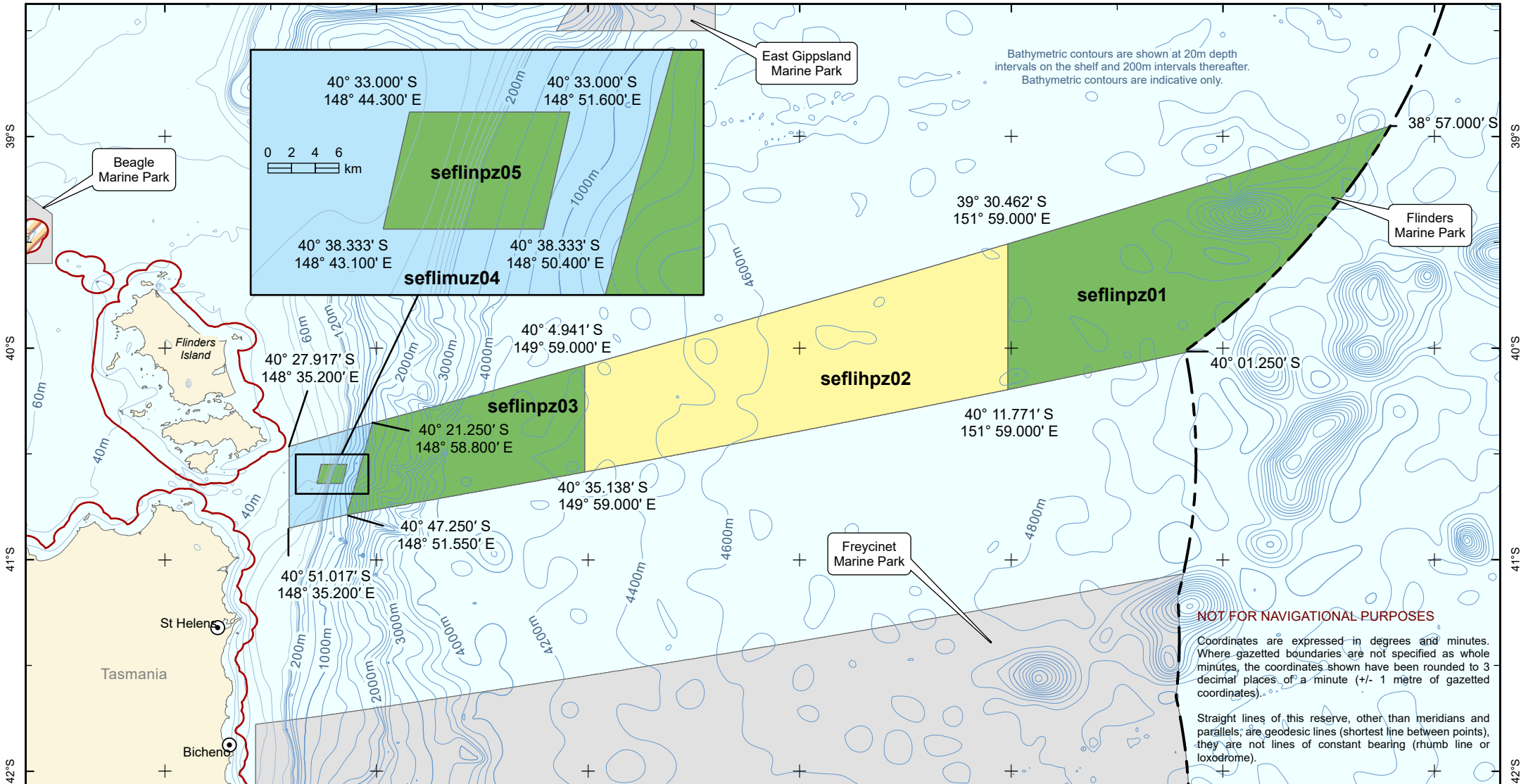


148°E 149°E 150°E 151°E 152°E 153°E 154°E



Bathymetric contours are shown at 20m depth intervals on the shelf and 200m intervals thereafter. Bathymetric contours are indicative only.

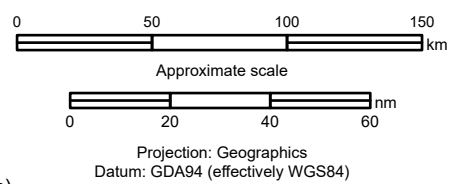
**NOT FOR NAVIGATIONAL PURPOSES**

Coordinates are expressed in degrees and minutes. Where gazetted boundaries are not specified as whole minutes, the coordinates shown have been rounded to 3 decimal places of a minute (+/- 1 metre of gazetted coordinates).

Straight lines of this reserve, other than meridians and parallels, are geodesic lines (shortest line between points), they are not lines of constant bearing (rhumb line or loxodrome).

### Flinders Marine Park Draft for consultation

- |                                   |                                                      |
|-----------------------------------|------------------------------------------------------|
| <b>Zoning</b>                     | <b>Other marine protected areas</b>                  |
| National Park Zone (IUCN II)      | Nearby Australian Marine Park                        |
| Habitat Protection Zone (IUCN IV) | State marine park                                    |
| Multiple Use Zone (IUCN VI)       | <b>Maritime boundaries</b>                           |
|                                   | Limit of coastal waters                              |
|                                   | Limit of Australian Exclusive Economic Zone (200 nm) |



Spatial data sources:  
 DCCEEW (2024): Australian Marine Parks  
 DCCEEW (2022): Collaborative Australian Protected Areas Database 2022  
 Geoscience Australia (2020): Australian Maritime Boundaries  
 Geoscience Australia (2006): GEODATA TOPO 250K  
 Geoscience Australia (2005): Australian Bathymetry and Topography

Produced by:  
 Environment Information Australia | Department of Climate Change, Energy, the Environment and Water