

138°30'E 139°E 139°30'E 140°E 140°30'E 141°E

NOT FOR NAVIGATIONAL PURPOSES

Coordinates are expressed in degrees and minutes. Where gazetted boundaries are not specified as whole minutes, the coordinates shown have been rounded to 3 decimal places of a minute (+/- 1 metre of gazetted coordinates).

Straight lines of this reserve, other than meridians and parallels, are geodesic lines (shortest line between points), they are not lines of constant bearing (rhumb line or loxodrome).

39°S

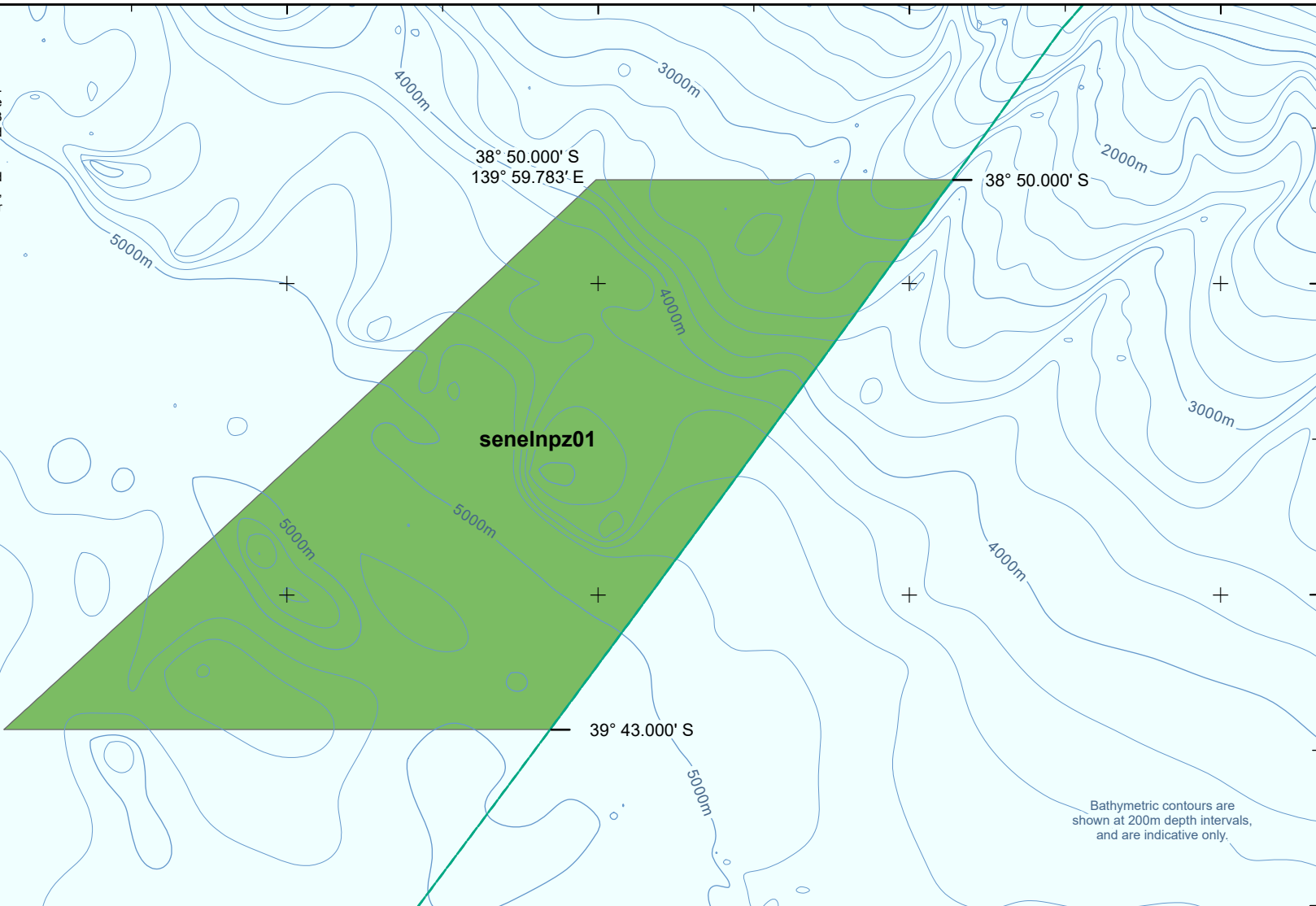
39°30'S

40°S

39°S

39°30'S

40°S



38° 50.000' S
139° 59.783' E

38° 50.000' S

39° 43.000' S
139° 02.700' E

39° 43.000' S

Bathymetric contours are shown at 200m depth intervals, and are indicative only.

Nelson Marine Park

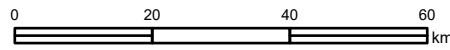
Draft for consultation

Zoning

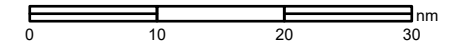
 National Park Zone (IUCN II)

Maritime boundaries

 Scheduled Area boundary between South Australia and Victoria



Approximate scale



Projection: Geographics
Datum: GDA94 (effectively WGS84)

Spatial data sources:
DCCEEW (2024): Australian Marine Parks
Geoscience Australia (2020): Australian Maritime Boundaries
Geoscience Australia (2005): Australian Bathymetry and Topography

Produced by:
Environment Information Australia | Department of Climate Change, Energy, the Environment and Water