

115°10'E

115°20'E

115°30'E

115°40'E

NOT FOR NAVIGATIONAL PURPOSES

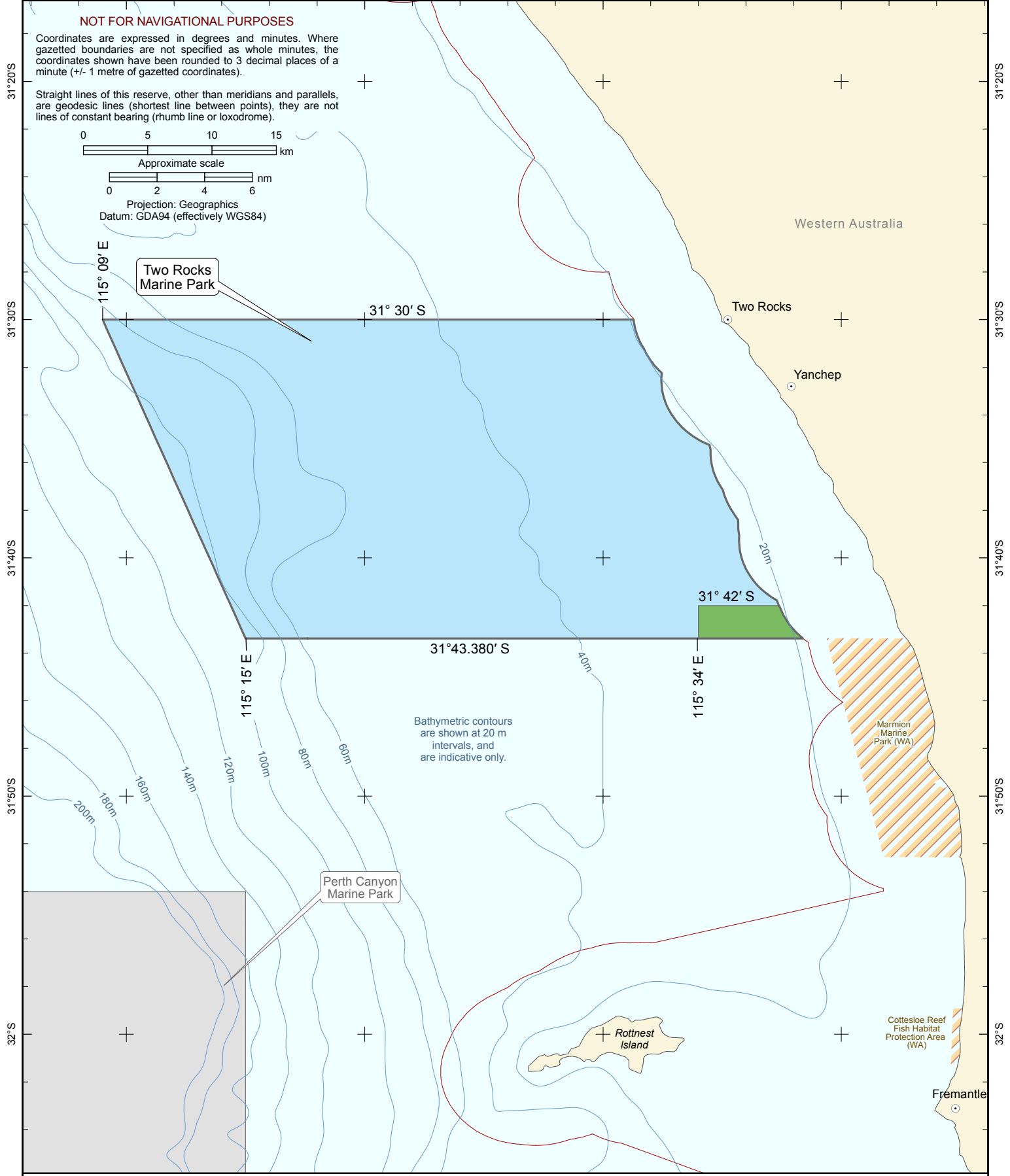
Coordinates are expressed in degrees and minutes. Where gazetted boundaries are not specified as whole minutes, the coordinates shown have been rounded to 3 decimal places of a minute (+/- 1 metre of gazetted coordinates).

Straight lines of this reserve, other than meridians and parallels, are geodesic lines (shortest line between points), they are not lines of constant bearing (rhumb line or loxodrome).



Approximate scale
Projection: Geographics
Datum: GDA94 (effectively WGS84)

Two Rocks Marine Park



Bathymetric contours are shown at 20 m intervals, and are indicative only.

Two Rocks Marine Park
Draft South-west Network Management Plan 2017

Zoning

- National Park Zone (IUCN II)
- Multiple Use Zone (IUCN VI)

Other marine protected areas

- Nearby Australian marine park
- State marine park (WA)

Maritime boundaries

- Limit of coastal waters

Australian Government data sources:
 DoEE (2017) : Australia's Network of Marine Parks (Draft)
 DoEE (2014) : Collaborative Australian Protected Areas Database
 Geoscience Australia (2014) : Australian Maritime Boundaries (AMB) v 3.0
 Geoscience Australia (2006) : GEODATA TOPO 250K
 Geoscience Australia (2005) : Australian Bathymetry and Topography

Produced by the Environmental Resources Information Network (ERIN)
 Australian Government Department of the Environment and Energy
 © Commonwealth of Australia, 2017