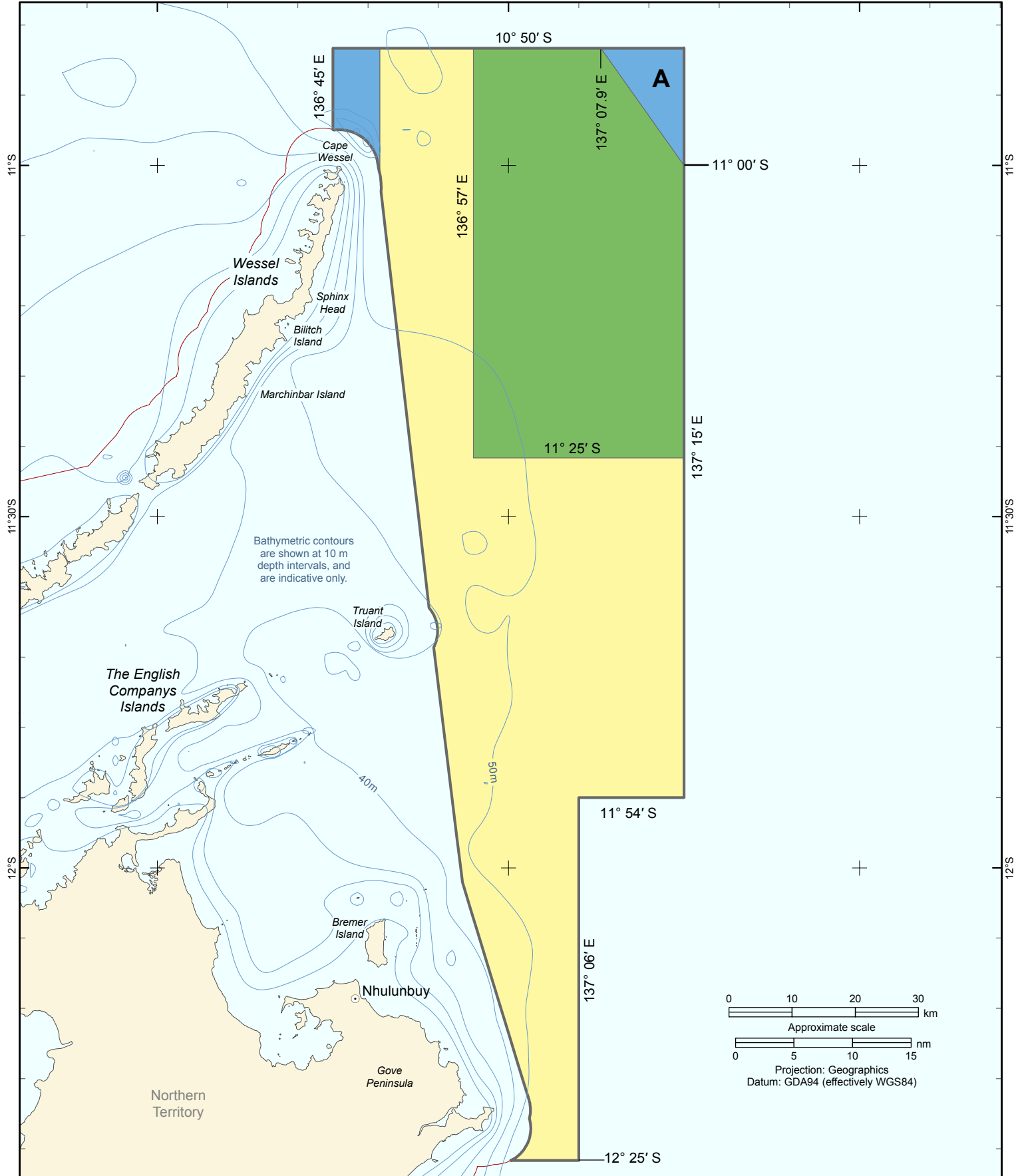


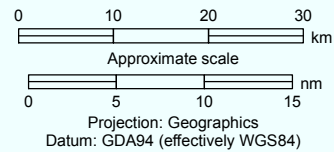
136°30'E

137°E

137°30'E



Bathymetric contours are shown at 10 m depth intervals, and are indicative only.



### Wessel Commonwealth Marine Reserve – Bioregional Advisory Panel recommended zoning

This map was produced for the independent CMR Review. It is not government policy.

#### Zoning

- Marine National Park Zone (IUCN II)
- Habitat Protection Zone (IUCN IV)
- Special Purpose Zone (IUCN VI)

#### Maritime boundaries

- Limit of coastal waters

*Note: Special Purpose Zone A has special conditions. Special Purpose Zone A allows demersal trawling (fish) and prohibits gillnetting. For more detail, refer to the 'Overview of the recommended zoning scheme for the North Commonwealth Marine Reserves Network'.*

**NOT FOR NAVIGATIONAL PURPOSES**

Coordinates are expressed in degrees and minutes.

Straight lines of this reserve, other than meridians and parallels, are geodesic lines (shortest line between points), they are not lines of constant bearing (rhumb line or loxodrome).