

INDEX TO IMAGES

MOLLUSCA

In the following, each entry is in the following order:

CAAB spcode, common name, scientific name, <authority>, family, notes, stations recorded

23199801, bivalve, Bivalvia sp. 1, radial ribs, 018GR030B-003

23207801, beaked cockles, Nuculanidae sp. 1, Nuculanidae, dead collected, 001BS001-006

23207802, beaked cockles, Nuculanidae sp. 2, Nuculanidae, 015BS004B-002;024GR044B-002

23207803, beaked cockles, Nuculanidae sp. 3, Nuculanidae, dead collected, 030GR054B-002

23226801, ark shell, Arcidae sp. 1, Arcidae, 053DR015B-017

23272801, thorny oyster, Spondylus sp. 1, Spondylidae, 038DR010B-020

23301801, chama, Chama sp. 1, Chamidae, 053DR015B-018

23355801, tellin, Tellinidae sp. 1, Tellinidae, 007BS003-009

23410801, bivalve, Thraciidae sp. 1, Thraciidae, 002GR001B-005

23499801, tusk shell, Scaphopoda sp. 1, 008GR013B-001

24080801, worm shells, Siliquaria sp. 1, Siliquariidae, dead in situ, 013DR001B-045

24191801, ladder shell, Epitoniidae sp. 1, Epitoniidae, dead?, 016GR026B-001

24202801, whelks, Fasciolarinae sp. 1, Buccinidae, 001BS001-007

24207801, volute, Volutaconus sp. 1, Volutidae, 037GR056B-002

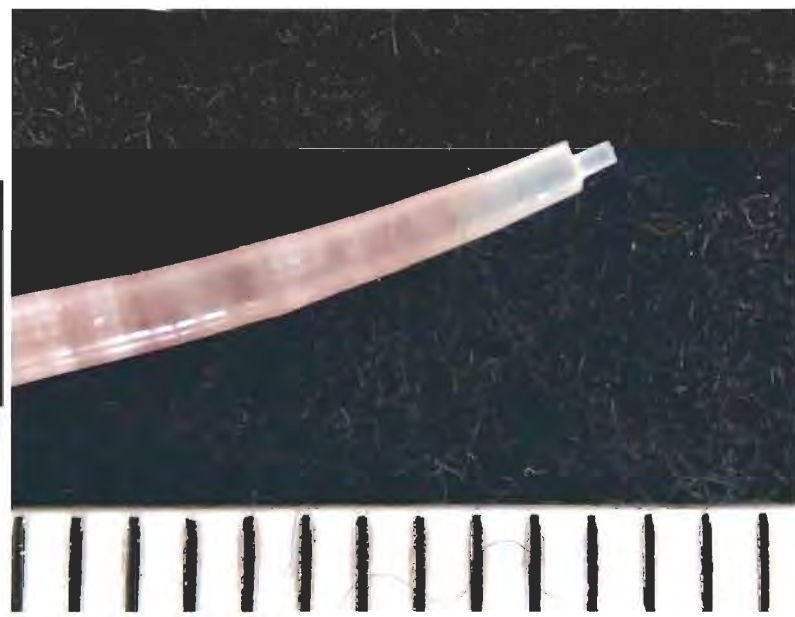
24220801, turrid, Turridae sp. 1, Turridae, 006GR009B-005

24220802, turrid, Turridae sp. 2, Turridae, 002GR085B-002

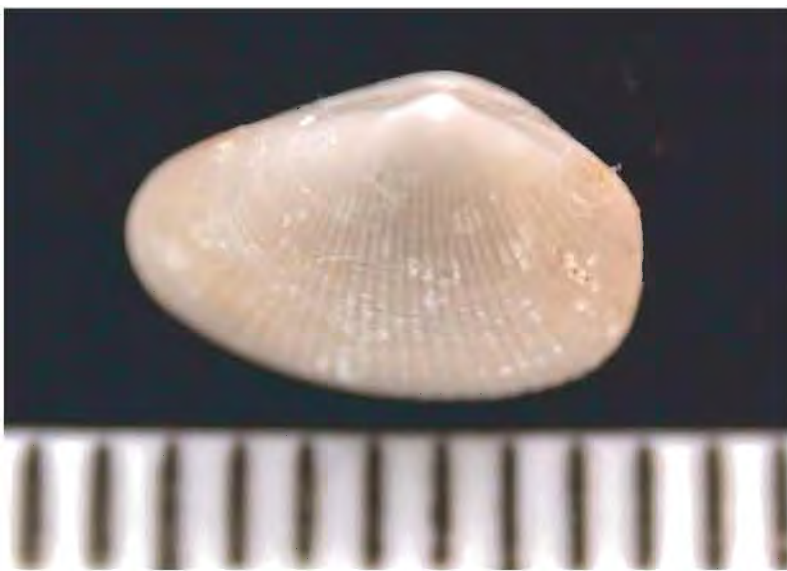
24221801, auger shell, Terebridae sp. 1, Terebridae, 009GR014B-001



23499801-008GR013B-001a-Scaphopoda-sp1.tif



23499801-008GR013B-001b-Scaphopoda-sp1.tif



23199801-018GR030B-003-Bivalvia-sp1.tif



23207801-001BS001-006-Nuculanidae-sp1.tif



23207802-015BS004B-002-Nuculanidae-sp2.tif



23207802-024GR044B-002-Nuculanidae-sp2.tif



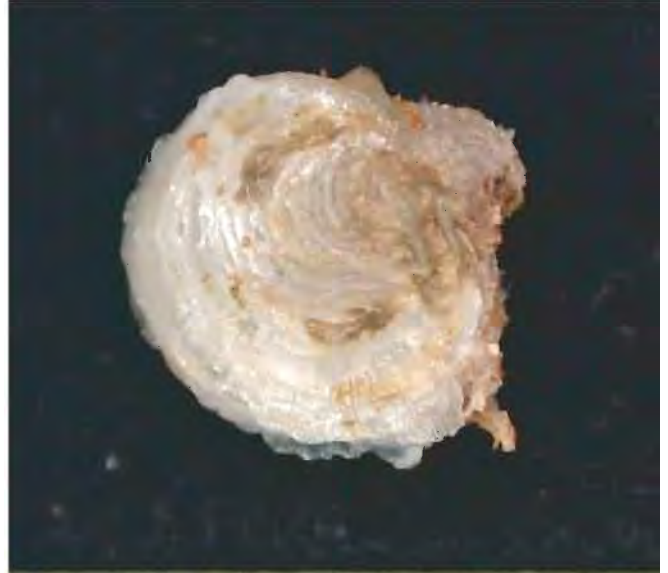
23207803-030GR054B-002-Nuculanidae-sp3.tif



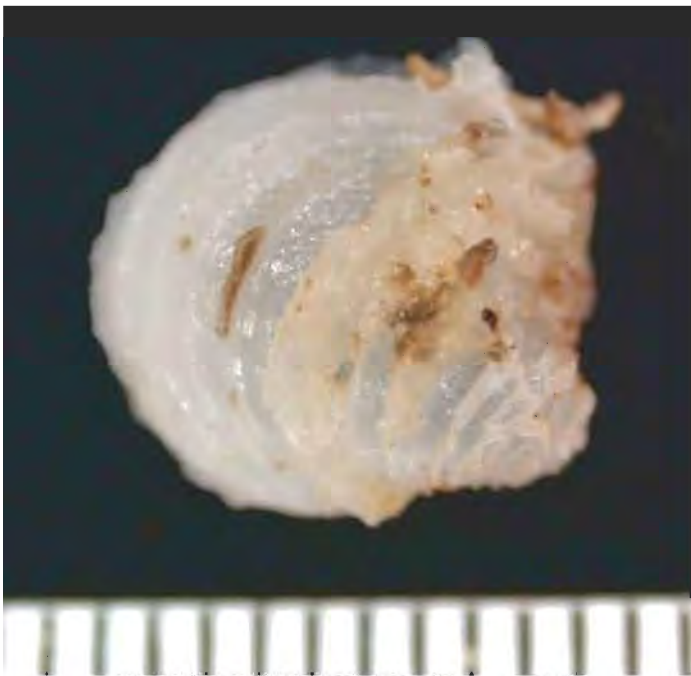
23226801-053DR015B-017-Arcidae-sp1.tif



23272801-038DR010B-020-Spondylus-sp1.tif



23301801-053DR015B-018a-Chama-sp1.tif



23301801-053DR015B-018b-Chama-sp1.tif



23355801-007BS003-009-Tellinidae-sp1.tif



23410801-002GR001B-005-Thraciidae-sp1.tif



24080801-013DR001B-045-Siliquaria-sp1.tif



24191801-016GR026B-001-Epitoiidae-sp1.tif



24207801-037GR056B-002a-Volutoconus-sp1.tif



24207801-037GR056B-002b-Volutoconus-sp1.tif



24221801-009GR014B-001a-Terebridae-sp1.tif



24221801-009GR014B-001b-Terebridae-sp1.tif



24202801-001BS001-007-Fasciolarinae-sp1.tif



24220801-006GR009B-005a-Turridae-sp1.tif



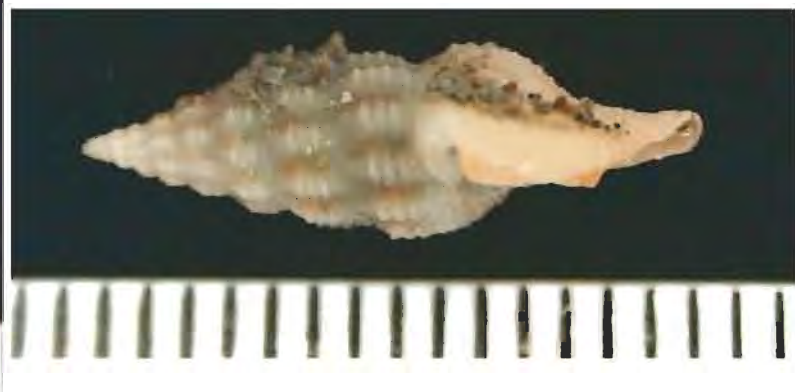
24220801-006GR009B-005b-Turridae-sp1.tif



24220802-002GR085B-002a-Turridae-sp2.tif



24220802-002GR085B-002b-Turridae-sp2.tif



24220802-002GR085B-002c-Turridae-sp2.tif