

INDEX TO IMAGES

Various Phyla (Nemertea, Sipunculida, Echiurida, Brachiopoda, Bryozoa)

In the following, each entry is in the following order:

CAAB spcode, common name, scientific name, <authority>, family, notes, stations recorded

- 14000801, ribbon worm, Nemertea sp. 1, brown bands on back, 018GR031B-004
14000802, ribbon worm, Nemertea sp. 2, red, 032BS006B-008
17000801, sipunculan worm, Sipuncula sp. 1, 012GR019B-002
17001801, sipunculan worm, Sipunculus sp. 1, Sipunculidae, 009GR015B-002
17020801, echiuran worm, Echiura sp. 1, 045DR014B-003
19150801, brachiopod, Brachiopoda sp. 1, fine ribs, 013DR001B-033;013DR001B-048;020DR005B-006
19150802, brachiopod, Brachiopoda sp. 2, smooth, round, 020Dr005B-005
19150803, brachiopod, Brachiopoda sp. 3, smooth, more elongate, 025DR007B-002
19150804, brachiopod, Brachiopoda sp. 4, coarser ribs, 043GR069B-005
20300801, bryozoan, Porina vertebralis, Porinidae, Cheilostomata, 008GR012B-005
20300802, bryozoan, Bryozoa sp. 1, Cheilostomata, tubes, 043DR012B-009
20300803, bryozoan, Bryozoa sp. 2, Cheilostomata, orange vane, 045DR014B-004
20300804, bryozoan, Bryozoa sp. 3, Cheilostomata, encrusting, 045DR014B-005
20322801, bryozoan, Flustridae sp. 1, Flustridae, soft, flat, 038DR010B-015
20325801, bryozoan, Nellia sp. 1, Quadricellariidae, 008GR012B-004
20330801, bryozoan, Beania sp. 1, Beaniidae, rigid, 029GR052B-002
20332801, bryozoan, Scrupocellaria curvata, Candidae, 013DR001B-064;043DR012B-004
20405801, bryozoan, Adeonella sp. 1, Adeonidae, large, 013DR001B-066
20405802, bryozoan, Adeonella sp. 2, Adeonidae, small, 013DR001B-0657
20487801, bryozoan, Triphyllozoon sp. 1, Phidoloporidae, 013DR001B-016



14000801-018GR031B-004a-Nemertea-sp1.tif



14000801-018GR031B-004b-Nemertea-sp1.tif



14000802-032BS006B-008-Nemertea-sp2.tif



17000801-012GR019B-002a-Sipuncula-sp1.tif



17000801-012GR019B-002b-Sipuncula-sp1.tif



17001801-009GR015B-002a-Sipunculus-sp1.tif



17001801-009GR015B-002b-Sipunculus-sp1.tif



17020801-045DR014B-003-Echiura-sp1.tif



19150801-013DR001B-033a-Brachiopoda-sp1.tif



19150801-013DR001B-033b-Brachiopoda-sp1.tif



19150801-013DR001B-048a-Brachiopoda-sp1.tif



19150801-013DR001B-048b-Brachiopoda-sp1.tif



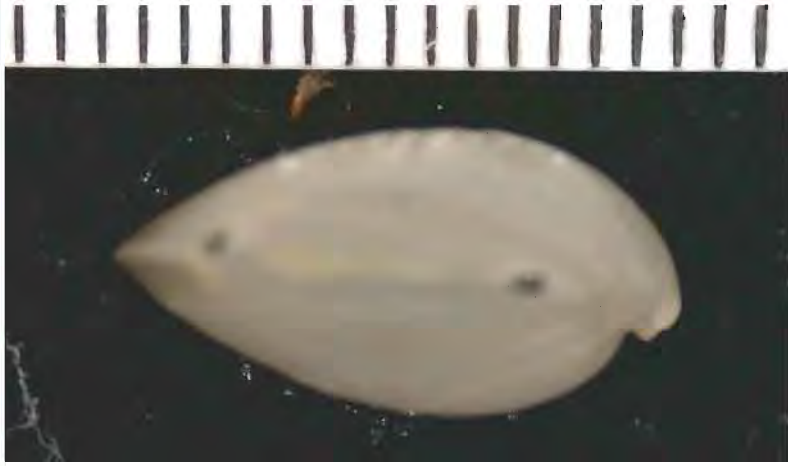
19150801-013DR001B-048c-Brachiopoda-sp1.tif



19150801-020DR005B-006-Brachiopoda-sp1.tif



19150802-020DR005B-005a-Brachiopoda-sp2.tif



19150802-020DR005B-005b-Brachiopoda-sp2.tif



19150803-025DR007B-002a-Brachiopoda-sp3.tif



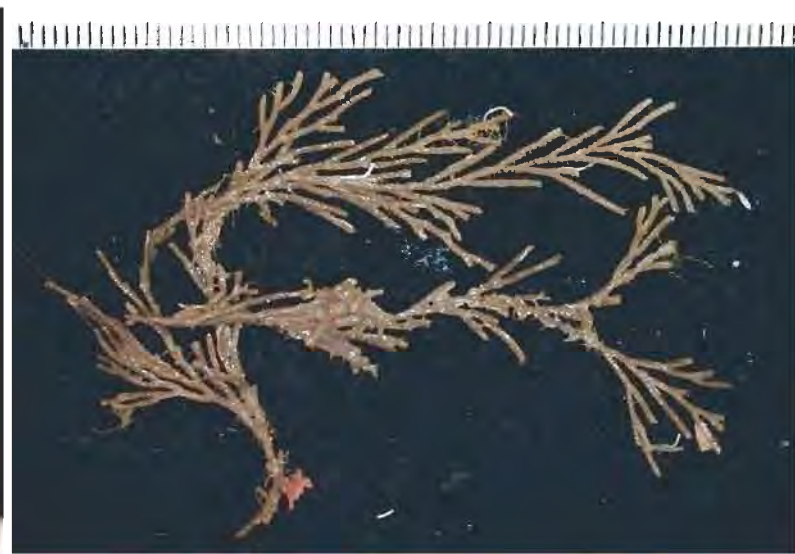
19150803-025DR007B-002b-Brachiopoda-sp3.tif



19150804-043GR069B-005-Brachiopoda-sp4.tif



20330801-029GR052B-002-Beania-sp1.tif



20332801-013DR001B-064-Scrupocellaria-curvata.tif



20332801-043DR012B-004-Scrupocellaria-curvata.tif



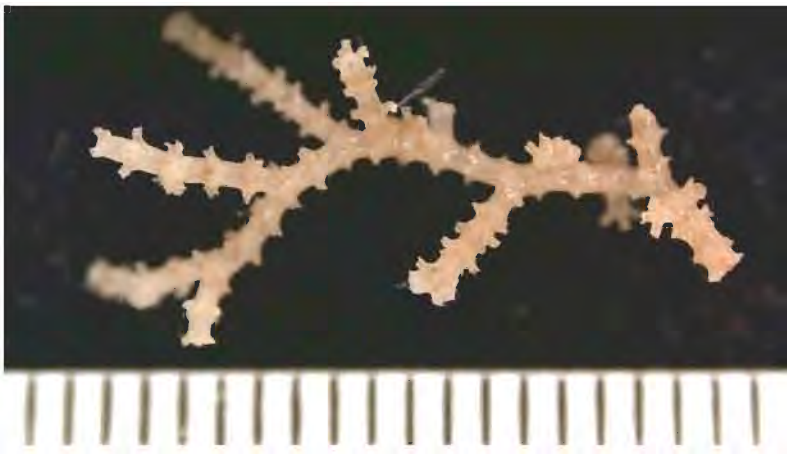
20405801-013DR001B-066-Adeonella-sp1.tif



20405802-013DR001B-065-Adeonella-sp2.tif



20487801-013DR001B-016-Triphyllozoon-sp1.tif



20300801-008GR012B-005-Porina-vertebralis.tif



20300802-043DR012B-009-Bryozoa-sp1.tif



20300803-045DR014B-004-Bryozoa-sp2.tif



20300804-045DR014B-005-Bryozoa-sp3.tif



20322801-038DR010B-015-Flustridae-sp1.tif



20325801-008GR012B-004-Nellia-sp1.tif