

INDEX TO IMAGES

POLYCHAETA

In the following, each entry is in the following order:

CAAB spcode, common name, scientific name, <authority>, family, notes, stations recorded

22000801, polychaete worm, Polychaeta sp. 1, 001BS001-002;005GR007B-003;010GR016B-001

22000802, polychaete worm, Polychaeta sp. 2, 001BS001-008

22000803, polychaete worm, Polychaeta sp. 3, red, long setae, 007GR011B-002

22000804, polychaete worm, Polychaeta sp. 4, sandy, long front setae, 015GR025B-002

22000805, polychaete worm, Polychaeta sp. 5, red, 034BS007B-002

22000806, polychaete worm, Polychaeta sp. 6, bristle, 048GR073B-002

22000807, polychaete worm, Polychaeta sp. 7, tube worm, 064GR083B-002

22024801, polychaete worm, Eunice sp. 1, Eunicidae, 039GR062B-004

22030801, polychaete worm, Onuphidae sp. 1, Onuphidae, 018GR031B-003

22062801, scale worm, Polynoidae sp. 1, Polynoidae, 007BS003-005

22062802, scale worm, Polynoidae sp. 2, Polynoidae, 013DR001B-049

22116801, polychaete worm, Flabelligeridae sp. 1, Flabelligeridae, setae crown, 020DR005B-008

22116802, polychaete worm, Flabelligeridae sp. 2, Flabelligeridae, few long setae, 049GR078B-002



22000801-001BS001-002a-Polychaeta-sp1.tif



22000801-001BS001-002b-Polychaeta-sp1.tif



22000801-005GR007B-003a-Polychaeta-sp1.tif



22000801-005GR007B-003b-Polychaeta-sp1.tif



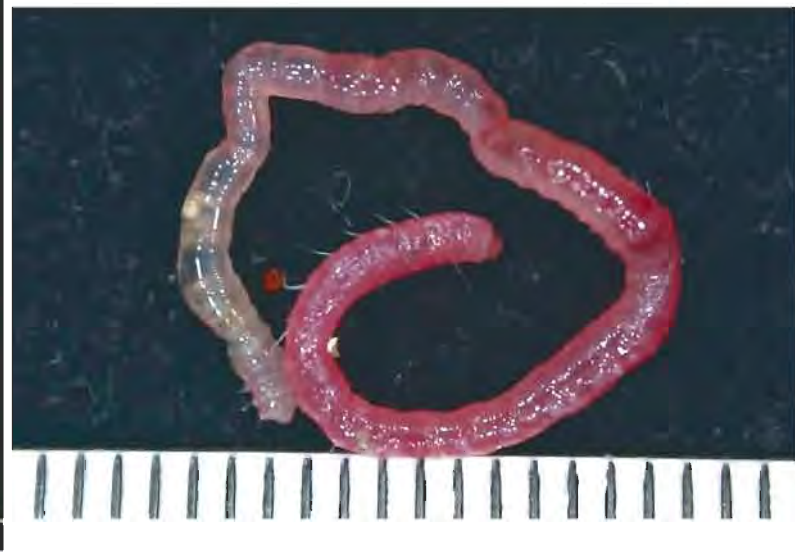
22000801-010GR016B-001a-Polychaeta-sp1.tif



22000801-010GR016B-001b-Polychaeta-sp1.tif



22000802-001BS001-008-Polychaeta-sp2.tif



22000803-007GR011B-002-Polychaeta-sp3.tif



22000804-015GR025B-002a-Polychaeta-sp4.tif



22000804-015GR025B-002b-Polychaeta-sp4.tif



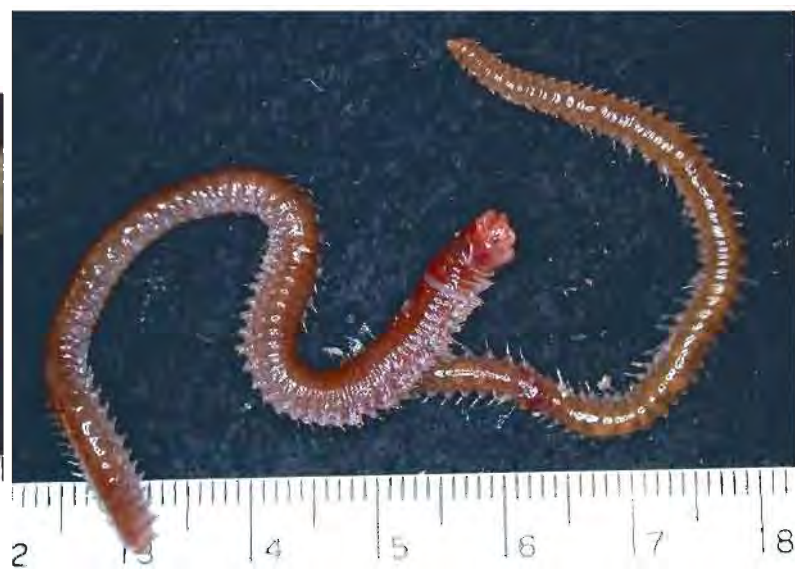
22000805-034BS007B-002-Polychaeta-sp5.tif



22000806-048GR073B-002-Polychaeta-sp6.tif



22000807-064GR083B-002-Polychaeta-sp7.tif



22024801-039GR062B-004-Eunice-sp1.tif



22062801-007BS003-005a-Polynoidae-sp1.tif



22062801-007BS003-005b-Polynoidae-sp1.tif



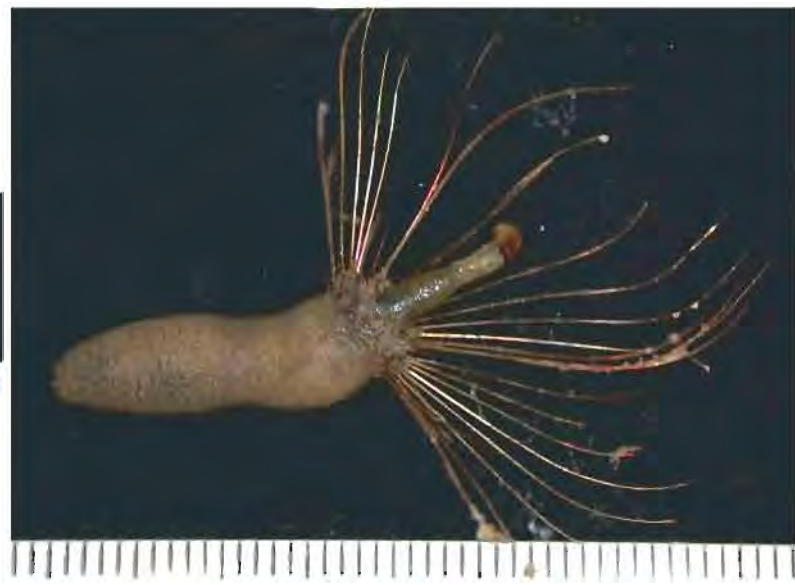
22062802-013DR001B-049a-Polynoidae-sp2.tif



22062802-013DR001B-049b-Polynoidae-sp2.tif



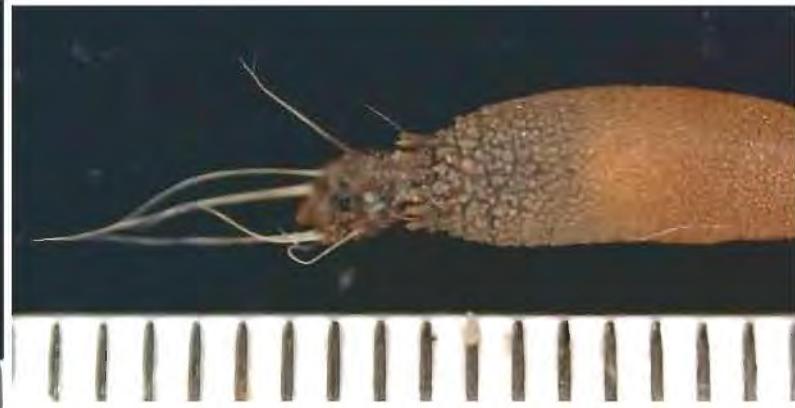
22030801-018GR031B-003-Onuphidae-sp1.tif



22116801-020DR005B-008-Flabelligeridae-sp1.tif



22116802-049GR078B-002a-Flabelligeridae-sp2.tif



22116802-049GR078B-002b-Flabelligeridae-sp2.tif



22116802-049GR078B-002c-Flabelligeridae-sp2.tif



22116802-049GR078B-002d-Flabelligeridae-sp2.tif