

# Mermaid Reef National Nature Reserve

December 2007 - Update



Australian Government  
Director of National Parks

## New Moorings

Moorings have been installed at Mermaid Reef to reduce the impact of anchoring in Mermaid lagoon. All visitors are required to use moorings and not anchor. The existing anchoring area inside the lagoon should only be used in emergencies. Due to their remote and exposed location, travel to Mermaid and the Rowley Shoals is not advised during the cyclone season (approximately December to March).

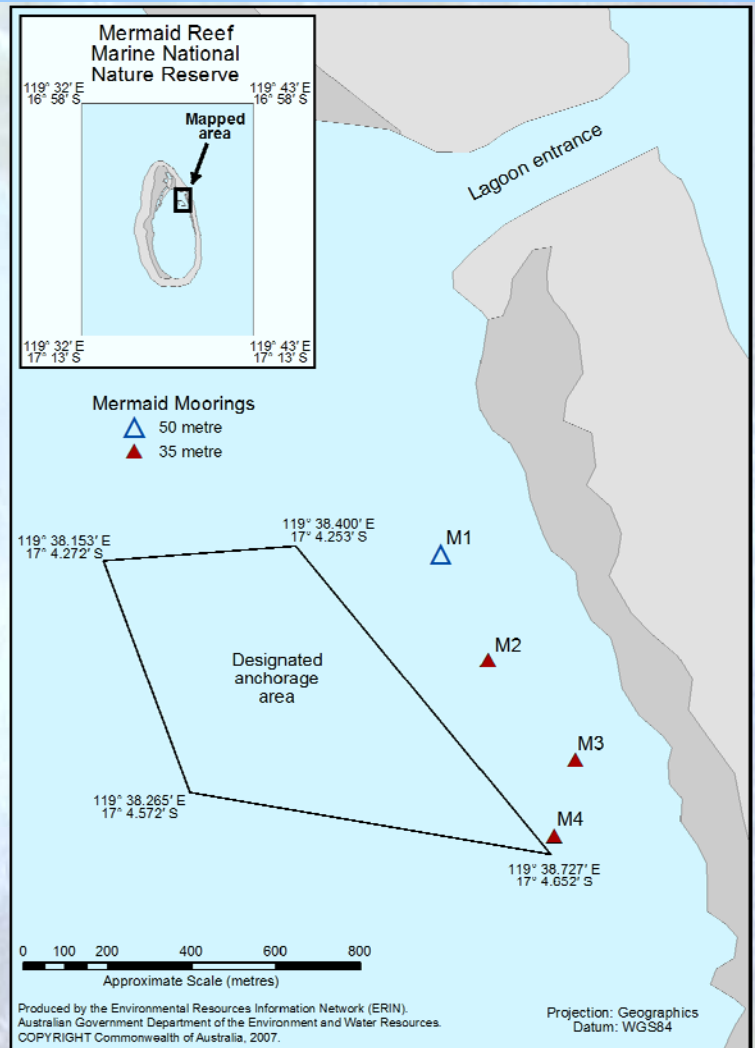
*Please note: No vessel should be left anchored or moored at Mermaid unattended.*

**ALL VISITORS MUST BOOK A MOORING**  
Contact WA DEC (08 9195 5500)

Guide to Moorings (see adjacent map):

Moorings	Location	Swing Circle
M1	119° 38.587' E, 17° 4.264' S	50m (larger vessels)
M2	119° 38.647' E, 17° 4.400' S	30m
M3	119° 38.759' E, 17° 4.529' S	30m
M4	119° 38.732' E, 17° 4.627' S	30m

*Note: All moorings are yellow with a DEWHA tag. Please read the tag on arrival for more information.*



## Management Plan Update

The management plan for Mermaid Reef expired on 16 May 2007. A draft management plan will be released for public comment in 2008. Until the new plan takes effect, the reserve will be managed in a manner consistent with its strict nature reserve classification, under Approvals issued by the Director of National Parks. For more information on Activity Management see 'Interim Management Arrangements' overleaf or contact the Mermaid Reef Reserve Manager.

For More Information Contact:

### Mermaid Reef Reserve Manager

Marine Protected Areas Management (North)  
[mpa@environment.gov.au](mailto:mpa@environment.gov.au)

OR call the Mermaid Reserve Manager on:  
(02) 6274 1111

Or visit our website:  
[www.environment.gov.au/coasts/mpa/index.html](http://www.environment.gov.au/coasts/mpa/index.html)



Photo: N. Wolfe

# Visiting Mermaid Reef

## Who to Contact

The Mermaid Reef Marine National Nature Reserve is managed by the Commonwealth Department of the Environment, Water, Heritage and the Arts (DEWHA, formerly the Department of the Environment and Water Resources) on behalf of the Director of National Parks, with the assistance of the Western Australian Department of Environment and Conservation (WA DEC) and the Western Australian Department of Fisheries. The other two reefs of the Rowley Shoals - Clerke and Imperieuse - are managed by WA DEC.

**BEFORE VISITING MERMAID: Contact the Mermaid Reef Reserve Manager on (02) 6274 1111**

**BEFORE VISITING THE ROWLEY SHOALS OR TO BOOK MOORINGS FOR MERMAID OR THE ROWLEY SHOALS: Contact WA DEC on (08) 9195 5500**

## Interim Management Arrangements

The entire Mermaid Reef Reserve is a strict nature reserve. No fishing is allowed anywhere in the Reserve. Until the new management plan is finalised, interim management arrangements will continue. Users are required to apply for approval for certain activities, as outlined in the activity management table. Contact DEWHA to apply for an approval (contact details overleaf).

*Note that scurrying, water skiing, jet skis and other noisy or high risk activities involving motorised personal water craft are prohibited at Mermaid Reef.*

## Activity Management at Mermaid Reef

Activity	Mermaid Reef
<b>Commercial Activities</b>	
Commercial fishing	x
Charter (tourism) fishing	x
Commercial dive tours	✓ approval required
Collecting	x
Photography	✓ approval required
Petroleum exploration	x
Research	✓ approval required
Anchoring	x (except in emergency)

<b>Recreational Activities</b>	
Fishing	x
Scuba diving and snorkelling	✓
Collecting	x
Photography	✓
Removing artefacts from shipwrecks	x

## Preparing for Your Visit

Please be aware that Mermaid Reef is a very remote, exposed location, and visitors should be adequately prepared for their visit to the Reserve. Visitors are reminded that regulations governing activities in the Reserve are enforceable under the *Environment Protection and Biodiversity Conservation Act 1999* and the *Commonwealth Historic Shipwrecks Act 1976*. To ensure you have the correct approvals and licenses for your visit, you must check with both DEWHA and WA DEC.

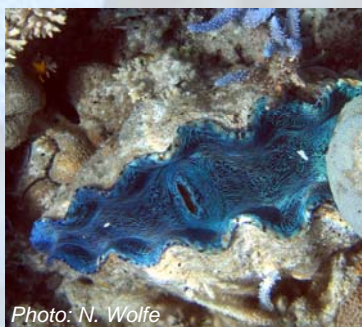


Photo: N. Wolfe

## While at Mermaid Reef

You must use the mooring you have booked. Do not anchor unless in an emergency. If you are undertaking a commercial activity, you must carry a copy of your approval and its conditions with you.

If you witness any prohibited activities occurring in the Reserve, please report it as soon as possible to WA DEC on phone (08) 9195 5500 or fax (08) 9193 5027, or phone the Mermaid Reef Reserve Manager on (02) 6274 1111.

