

# PB32 – Great Australian Bight IMCRA Transition

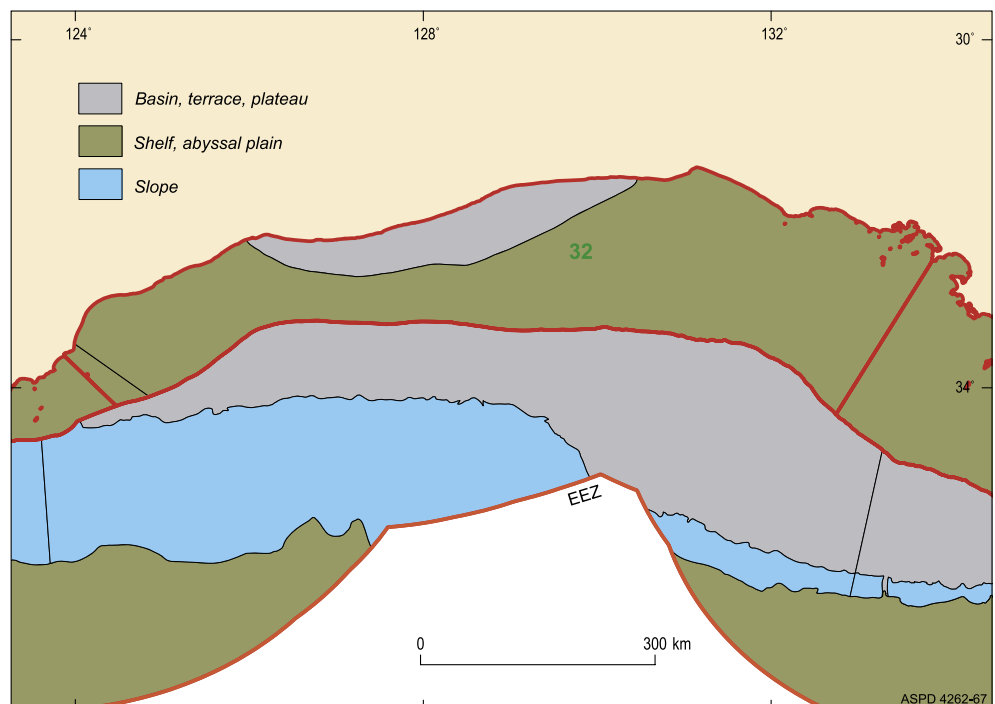


Total Area (km <sup>2</sup> )	Water Depth (m)			
	Minimum	Maximum	Mean	Std Dev.
144,970	0	-354	-74	32

Geomorphic Units (km <sup>2</sup> ) N = 3													
CLASS 1		CLASS 2		CLASS 3		CLASS 4		CLASS 5		CLASS 6		CLASS 7	
No.	Area	No.	Area	No.	Area	No.	Area	No.	Area	No.	Area	No.	Area
2	123,710	–	–	–	–	–	–	–	–	–	–	1	21,260
CLASS 8		CLASS 9		CLASS 10		CLASS 11		CLASS 12		CLASS 13		CLASS 14	
No.	Area	No.	Area	No.	Area	No.	Area	No.	Area	No.	Area	No.	Area
–	–	–	–	–	–	–	–	–	–	–	–	–	–

## Notes:

- This bioregion is the 5th largest bioregion of the IMCRA shelf bioregions.
- Class 1 includes units defined by the distribution and abundance of pinnacles, banks, and sand banks.
- This bioregion contains the 4th largest area of Class 1 units and 6th largest area of Class 7 units of all the IMCRA shelf bioregions.
- This bioregion is one of six IMCRA shelf bioregions that contain two classes of geomorphic units.



Geomorphic Units in PB32 – Great Australian Bight IMCRA Transition.

## For further information, please contact:

National Oceans Office  
GPO Box 2139, Hobart TAS 7001, Australia  
Tel: +61 3 6221 5000 Fax: +61 3 6221 5050  
Web: [www.oceans.gov.au](http://www.oceans.gov.au)



Australian Government  
Department of the  
Environment and Heritage  
Geoscience Australia

