

PB35 – Bass Strait IMCRA Province

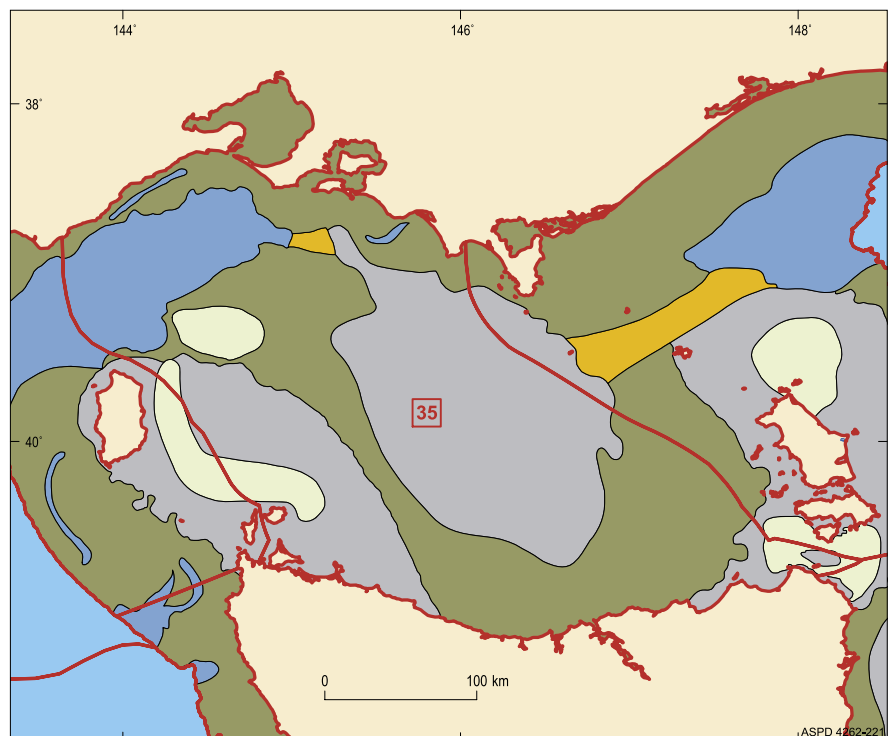


Total Area (km ²)	Water Depth (m)			
	Minimum	Maximum	Mean	Std Dev.
96,670	0	-90	-61	23

Geomorphic Units (km ²) N = 18													
CLASS 1		CLASS 2		CLASS 3		CLASS 4		CLASS 5		CLASS 6		CLASS 7	
No.	Area	No.	Area	No.	Area	No.	Area	No.	Area	No.	Area	No.	Area
2	27,600	–	–	–	–	1	280	–	–	–	–	8	26,410
CLASS 8		CLASS 9		CLASS 10		CLASS 11		CLASS 12		CLASS 13		CLASS 14	
No.	Area	No.	Area	No.	Area	No.	Area	No.	Area	No.	Area	No.	Area
–	–	–	–	–	–	4	3,180	3	7,110	–	–	–	–

Notes:

- This bioregion is the 8th largest bioregion of the IMCRA shelf bioregions.
- This bioregion contains the 5th largest area of Class 7 and 4th largest Class 12 units of all the IMCRA shelf bioregions.
- This bioregion is one of four IMCRA shelf bioregions to contain five classes of geomorphic units.



Geomorphic Units in PB35
– Bass IMCRA Province.

Bank, sandbank
 Deep, escarpment
 Shelf, abyssal plain

Basin, terrace, plateau
 Ridge, sill
 Slope

For further information, please contact:

National Oceans Office
GPO Box 2139, Hobart TAS 7001, Australia
Tel: +61 3 6221 5000 Fax: +61 3 6221 5050
Web: www.oceans.gov.au



Australian Government
Department of the
Environment and Heritage
Geoscience Australia

