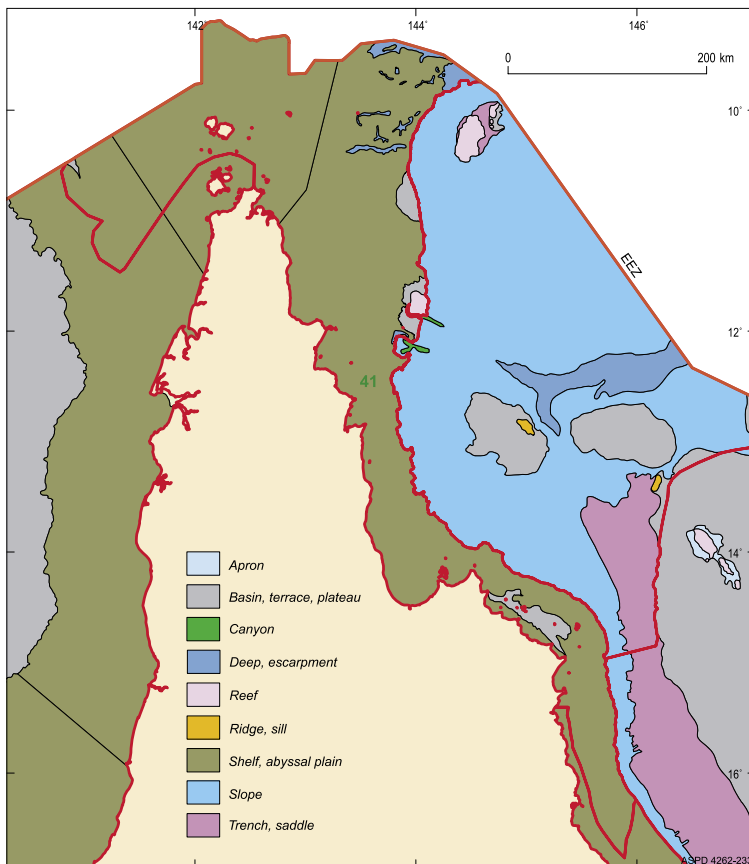


PB41 – Northeast IMCRA Transition



Total Area (km ²)	Water Depth (m)			
	Minimum	Maximum	Mean	Std Dev.
75,450	0	1184	-4	15

Geomorphic Units (km ²) N = 23													
CLASS 1		CLASS 2		CLASS 3		CLASS 4		CLASS 5		CLASS 6		CLASS 7	
No.	Area	No.	Area	No.	Area	No.	Area	No.	Area	No.	Area	No.	Area
5	90,330	–	–	–	–	–	–	–	–	–	–	5	2,940
CLASS 8		CLASS 9		CLASS 10		CLASS 11		CLASS 12		CLASS 13		CLASS 14	
No.	Area	No.	Area	No.	Area	No.	Area	No.	Area	No.	Area	No.	Area
–	–	–	–	–	–	–	–	12	1,870	–	–	1	390



Notes:

- This bioregion is the 7th largest bioregion of the IMCRA shelf bioregions.
- Class 1 includes units defined by the distribution and abundance of pinnacles, banks, and sand banks.
- This bioregion is one of four IMCRA shelf bioregions to contain four classes of geomorphic units.
- The bioregion contains many coral reefs of the Great Barrier Reef.

Geomorphic Units in PB41 – Northeast IMCRA Transition.

For further information, please contact:

National Oceans Office
GPO Box 2139, Hobart TAS 7001, Australia
Tel: +61 3 6221 5000 Fax: +61 3 6221 5050
Web: www.oceans.gov.au



Australian Government
Department of the
Environment and Heritage
Geoscience Australia

