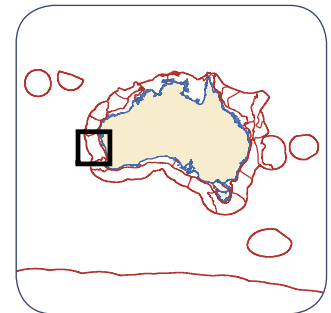


PB6 – Central Western Province

This bioregion is located on the western margin of Australia.

Total Area (km ²)	Water Depth (m)			
	Minimum	Maximum	Mean	Std Dev.
286,730	-33	-6,001	-3,815	1,866

Primary Bathymetric Units (km ²)			Biomes (km ²) N = 7		
Slope	Rise	AP / DOF	Upper Slope	Mid-upper Slope	Mid Slope
129,120	52,090	105,170	4,320	8,590	7,610



No. of Demersal Fish Species:	480 (15 string nodes)
Key Indicator Demersal Fish Species:	<i>Dicrolene</i> sp., <i>Epigonus macrops</i> , <i>Monomitopus</i> sp., <i>Neomerinthe cf nielsenii</i> , <i>Parascyllium sparsimaculatum</i> , <i>Dipturus</i> sp.
No. of Endemics:	31
Strength:	1.7 (weakly defined)

Geomorphic Units (km ²) N = 11													
CLASS 1		CLASS 2		CLASS 3		CLASS 4		CLASS 5		CLASS 6		CLASS 7	
No.	Area	No.	Area	No.	Area	No.	Area	No.	Area	No.	Area	No.	Area
1	103,910	6	107,630	1	52,240	–	–	–	–	–	–	2	21,110
CLASS 8		CLASS 9		CLASS 10		CLASS 11		CLASS 12		CLASS 13		CLASS 14	
No.	Area	No.	Area	No.	Area	No.	Area	No.	Area	No.	Area	No.	Area
–	–	–	–	–	–	–	–	2	1,500	–	–	–	–

Notes:

- This bioregion is one of seven NBMB bioregions to cover all three Primary Bathymetric Units.
- This bioregion contains the largest area of rise of all the NBMB bioregions.
- This bioregion is one of 14 NBMB bioregions to contain all of the biome types
- The southern boundary of this bioregion is well-defined by Perth Canyon. This large submarine canyon is a significant geomorphic feature on the margin. Studies have shown that it represents a major faunal discontinuity for sponges, corals, decapods and xanthid crabs, as well as affecting the major ocean currents and associated water properties by being a conduit for significant upwelling.
- Biomes defined by the demersal fish depth structure are the 6th largest in terms of their total area and cover the 7th largest area as a percentage of the bioregion area for all the NBMB bioregions.

...continued page 2

For further information, please contact:

National Oceans Office
GPO Box 2139, Hobart TAS 7001, Australia
Tel: +61 3 6221 5000 Fax: +61 3 6221 5050
Web: www.oceans.gov.au

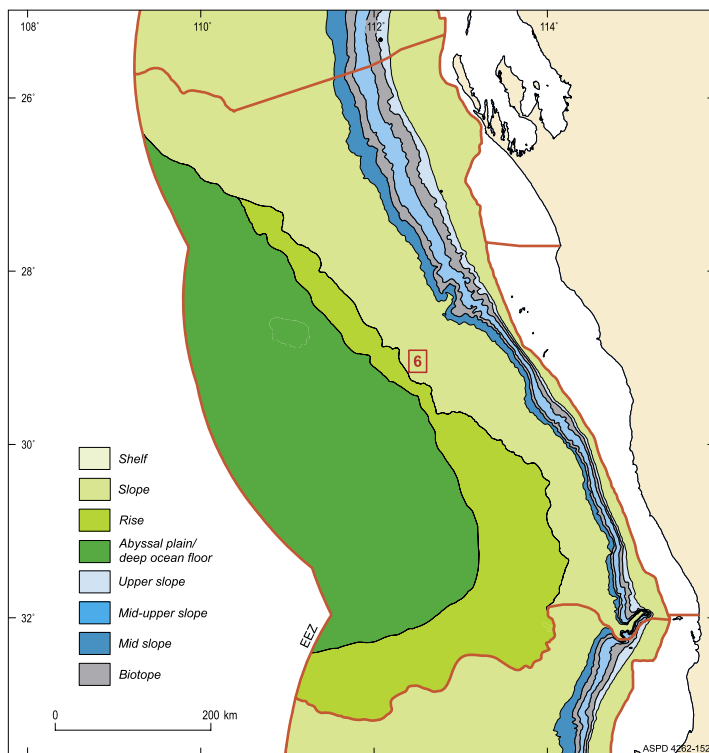


Australian Government
Department of the
Environment and Heritage
Geoscience Australia

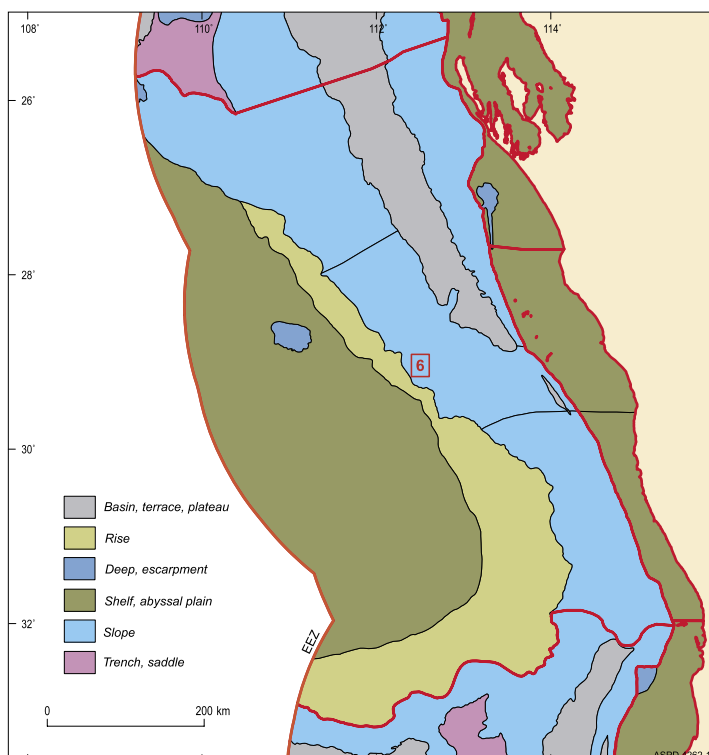


Notes (continued):

- This bioregion is one of two NBMB bioregions to contain five classes of geomorphic units.
- Class 2 in this bioregion is the 4th biggest of all the NBMB bioregions.
- Class 2 includes units defined by the spacing of submarine canyons on the slope.



Biomes in PB6 – Central Western Province.



Geomorphic Units in PB6 – Central Western Province.