



THE NORTH-WEST MARINE BIOREGIONAL PLAN

## BIOREGIONAL PROFILE

**LARGE FORMAT MAPS**

**KEY ECOLOGICAL FEATURES**

**GEOMORPHIC (SEAFLOOR) FEATURES**



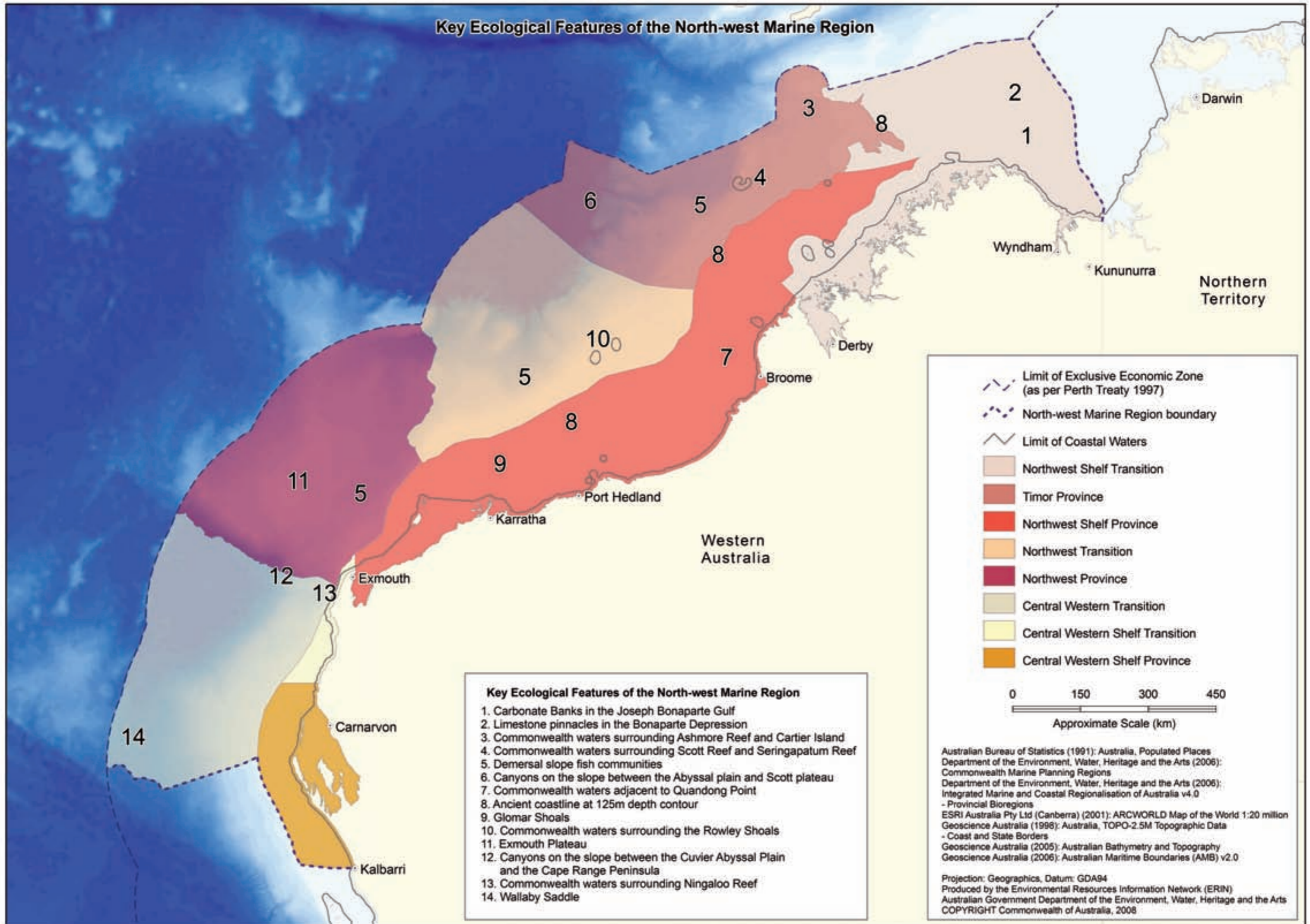
A DESCRIPTION OF THE ECOSYSTEMS, CONSERVATION VALUES AND USES  
OF THE NORTH-WEST MARINE REGION



Australian Government

Department of the Environment, Water, Heritage and the Arts

## Key Ecological Features of the North-west Marine Region



### Key Ecological Features of the North-west Marine Region

1. Carbonate Banks in the Joseph Bonaparte Gulf
2. Limestone pinnacles in the Bonaparte Depression
3. Commonwealth waters surrounding Ashmore Reef and Cartier Island
4. Commonwealth waters surrounding Scott Reef and Seringapatam Reef
5. Demersal slope fish communities
6. Canyons on the slope between the Abyssal plain and Scott plateau
7. Commonwealth waters adjacent to Quandong Point
8. Ancient coastline at 125m depth contour
9. Glomar Shoals
10. Commonwealth waters surrounding the Rowley Shoals
11. Exmouth Plateau
12. Canyons on the slope between the Cuvier Abyssal Plain and the Cape Range Peninsula
13. Commonwealth waters surrounding Ningaloo Reef
14. Wallaby Saddle

- Limit of Exclusive Economic Zone (as per Perth Treaty 1997)
- North-west Marine Region boundary
- Limit of Coastal Waters
- Northwest Shelf Transition
- Timor Province
- Northwest Shelf Province
- Northwest Transition
- Northwest Province
- Central Western Transition
- Central Western Shelf Transition
- Central Western Shelf Province

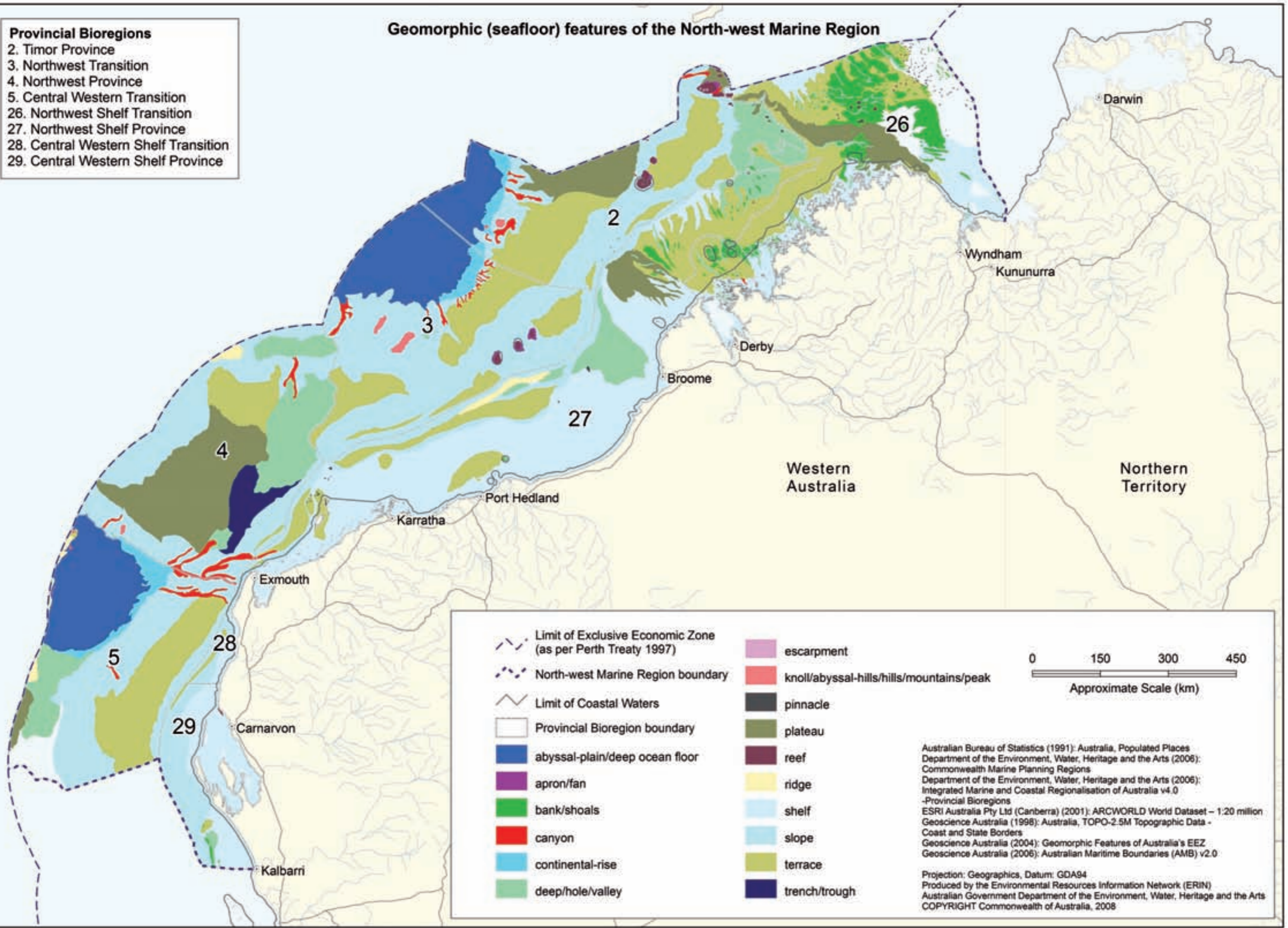
0 150 300 450  
 Approximate Scale (km)

Australian Bureau of Statistics (1991): Australia, Populated Places  
 Department of the Environment, Water, Heritage and the Arts (2006): Commonwealth Marine Planning Regions  
 Department of the Environment, Water, Heritage and the Arts (2006): Integrated Marine and Coastal Regionalisation of Australia v4.0 - Provincial Bioregions  
 ESRI Australia Pty Ltd (Canberra) (2001): ARCWORLD Map of the World 1:20 million  
 Geoscience Australia (1996): Australia, TOPO-2.5M Topographic Data - Coast and State Borders  
 Geoscience Australia (2005): Australian Bathymetry and Topography  
 Geoscience Australia (2006): Australian Maritime Boundaries (AMB) v2.0

Projection: Geographics, Datum: GDA94  
 Produced by the Environmental Resources Information Network (ERIN)  
 Australian Government Department of the Environment, Water, Heritage and the Arts  
 COPYRIGHT Commonwealth of Australia, 2008

# Geomorphic (seafloor) features of the North-west Marine Region

- Provincial Bioregions**
- 2. Timor Province
  - 3. Northwest Transition
  - 4. Northwest Province
  - 5. Central Western Transition
  - 26. Northwest Shelf Transition
  - 27. Northwest Shelf Province
  - 28. Central Western Shelf Transition
  - 29. Central Western Shelf Province



- Limit of Exclusive Economic Zone (as per Perth Treaty 1997)
- North-west Marine Region boundary
- Limit of Coastal Waters
- Provincial Bioregion boundary
- abyssal-plain/deep ocean floor
- apron/fan
- bank/shoals
- canyon
- continental-rise
- deep/hole/valley

- escarpment
- knoll/abyssal-hills/hills/mountains/peak
- pinnacle
- plateau
- reef
- ridge
- shelf
- slope
- terrace
- trench/trough



Australian Bureau of Statistics (1991): Australia, Populated Places  
 Department of the Environment, Water, Heritage and the Arts (2006): Commonwealth Marine Planning Regions  
 Department of the Environment, Water, Heritage and the Arts (2006): Integrated Marine and Coastal Regionalisation of Australia v4.0 - Provincial Bioregions  
 ESRI Australia Pty Ltd (Canberra) (2001): ARCWORLD World Dataset - 1:20 million  
 Geoscience Australia (1998): Australia, TOPO-2.5M Topographic Data - Coast and State Borders  
 Geoscience Australia (2004): Geomorphic Features of Australia's EEZ  
 Geoscience Australia (2006): Australian Maritime Boundaries (AMB) v2.0

Projection: Geographics, Datum: GDA94  
 Produced by the Environmental Resources Information Network (ERIN)  
 Australian Government Department of the Environment, Water, Heritage and the Arts  
 COPYRIGHT Commonwealth of Australia, 2008